

WARRANTY

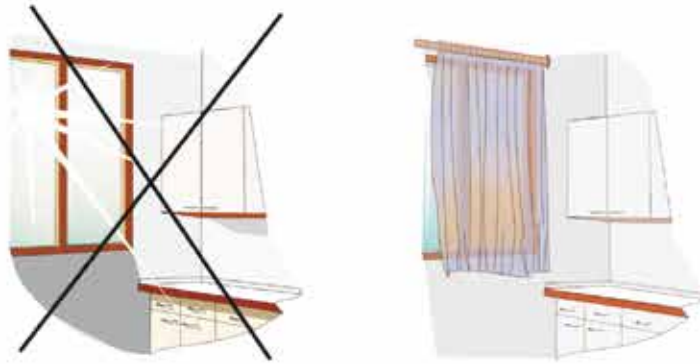
delamora

USE AND MAINTENANCE INSTRUCTIONS

We would like to thank you for the trust you have placed in us by purchasing one of our kitchens. Next, we will detail some indications for the proper use and maintenance of your kitchen. Following these simple tips, you can enjoy your kitchen in perfect conditions for many years. Note that damage caused by non-diligence will not be subject to guarantee.

Environment maintenance

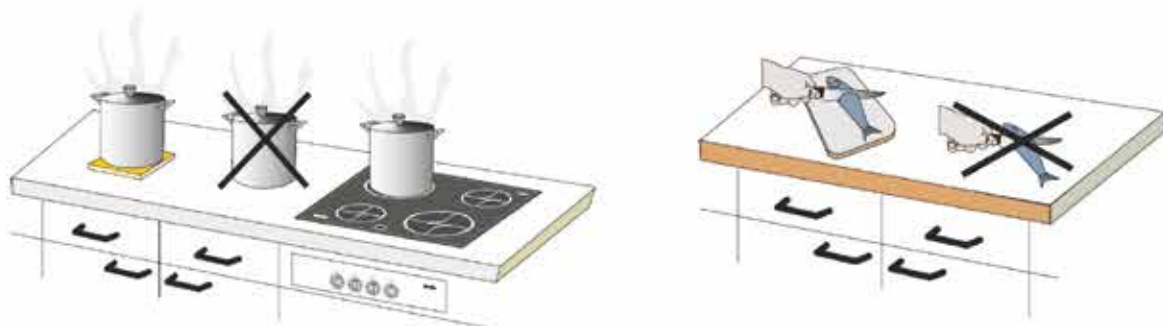
- It is convenient that the kitchen has a good ventilation, so the ventilation grilles must be uncovered.
- The ideal temperature for the cabinet maintenance is between 16 and 26°C so you should keep it at those values.
- The humidity in the room should be maintained between 35 and 65%. For the case of natural veneered models with wooden doors it is between 45 and 55%.
- Close your curtains during the central hours of the day to avoid sun exposure both in cabinet and appliances, as it causes deterioration. Lacquered and varnished doors are especially susceptible to discoloration due to prolonged direct sunlight.



Recommendations for countertops

The countertop is the most used area of the kitchen because it is the work surface. Read carefully the following specific instructions for laminate countertops:

- Our laminate countertops support occasional food products spills. But you should clean it immediately because certain products can leave marks after prolonged exposure.
- Do not allow water or other liquid to accumulate on the countertop, especially in sink, stovetop and other inserts joints. Dry it promptly to prevent it from penetrating assembly joints and damaging cabinet.
- Do not cut food directly on the countertop. Use a cutting board to avoid scratching it.
- When removing a hot container from the cooking area, do not place it directly on the countertop and use a protector.



For other countertops, such as granite, porcelain and solid-surface, we recommend you to follow the manufacturer's instructions.

USE AND MAINTENANCE INSTRUCTIONS

Recommendations regarding steam and humidity

Kitchen cabinet is made of moisture sensitive materials therefore direct steam emanations, which cause edges peel off, are especially. So, you should keep in mind:

- Turn on the extractor hood every time you cook.
- Open the pressure cooker under the hood and with it in operation.
- Dry the steam condensation of steam that adheres to the cabinet.
- Do not use small appliances that emit steam or heat under tall cabinet. Use them on the front countertop or, if necessary, under the extractor hood.
- Once the dishwasher washing cycle is finished, wait at least 20 minutes before opening the door. In this way, the steam will condense inside the appliance producing a moderate emanation when opened.
- Verify the oven tightness and the heat emanation to the adjoining cabinet; if you find it too hot it means that the joints are damaged and you have to replace them so as not to affect the cabinet. It is necessary to install protectors in poly laminate doors.
- Do not leave the oven door open after cooking during the cooling. This position is only suitable for drying after an internal cleaning of the oven.
- Avoid the spillage of corrosive products on cabinet or fittings, such as strong cleaning products or vinegar. If this occurs, clean it promptly.



Recommendations regarding the cabinet use

The cabinet passes the resistance tests satisfactorily with many use cycles as long as they are utilised for their own functions.

- Do not lean on doors or open drawers, it may cause slack or malfunction in the fittings.
- Do not cut food directly on the countertop, use a suitable board for this purpose.
- Do not allow your children to play with the cabinet by hanging from the tall modules, swinging over the drawers or using the low shelves as an improvised stair. These actions, in addition to damaging the cabinet, put their safety at risk.
- Do not force the fittings beyond their maximum opening or stop abruptly.
- If you need to store heavy items, place them in the low modules. This way, you do not overload the tall cabinet and avoid the risk of falling when storing or removing it.

USE AND MAINTENANCE INSTRUCTIONS

Cleaning and maintenance recommendations

We can choose between different types of surfaces and finishes for kitchen cabinet, as well as different appliances or components. However, it is important to read the article information, follow the instructions for care, and maintain perfect hygiene.

- To clean the cabinet, use a damp cellulose or microfibre cloth (if necessary, utilise neutral soap) and dry the surface with another cloth.
- If it is lacquered cabinet, the cloths must be moistened and be especially soft, because they have less resistance to rubbing. Then, dry them in one direction to avoid fogging.
- If it is varnished wood remember to clean and dry in the grain direction, preferably with a damp cloth. If you use soap, it must be neutral, do not use strong products that contain solvents or acetones.

Below we will show you the most common contraindications:

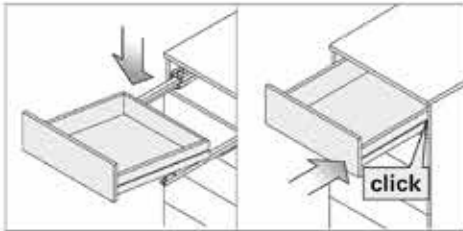
- Do not use detergents or polishes which contain abrasive elements and acetone.
- Do not use ammonia cleaners, bleach, acetone or solvents.
- Do not use scourer or abrasive products to avoid scratching the doors surface or laminate countertops.
- Do not clean dry doors, especially high-gloss lacquered surfaces. They can lose it with the rubbing of dry microfiber cloths.
- Do not use devices that emit steam to clean.

STAINS ORIGIN VANISHED AND LACQUERED	HOW TO CLEAN
Various drinks and vegetable stains.	Use a damp cloth.
Wax.	Remove as much as possible previously, clean with a cloth dampened with hot water and dry.
Grease.	Use a damp sponge and dish soap, rinse and dry.
Lime stains.	Use a damp sponge and dry immediately.
Blood, eggs and animal origin stains.	Use a damp sponge and dish soap, rinse and dry.
Ink.	Alcohol (not in varnish), lemon juice or commercial product to clean rust.

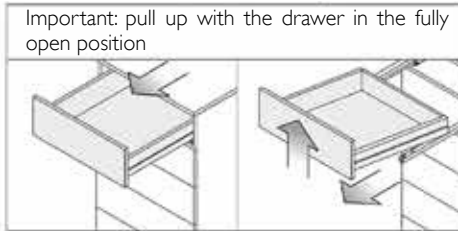
Following these recommendations, as well as those of the electrical appliances and countertops manufacturers, you can enjoy your kitchen in perfect condition for many years.

ASSEMBLY INSTRUCTIONS

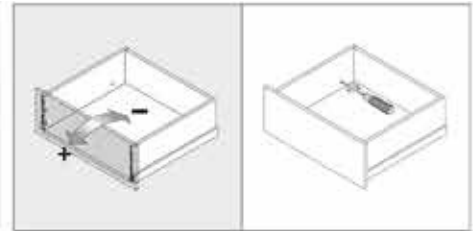
DRAWER INSERTION



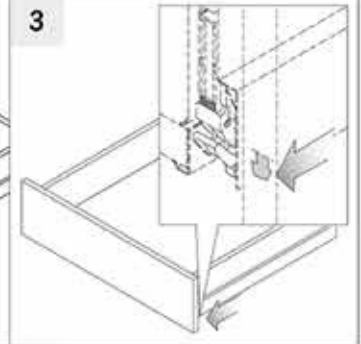
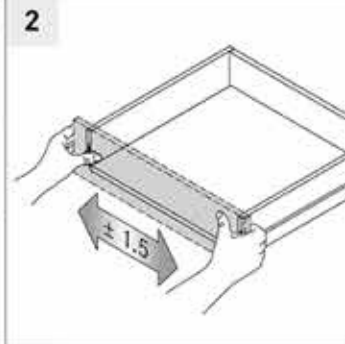
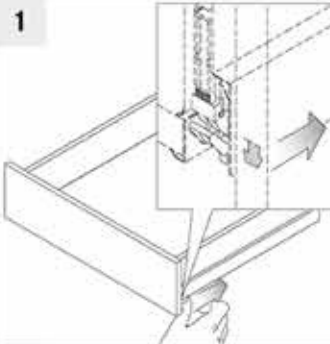
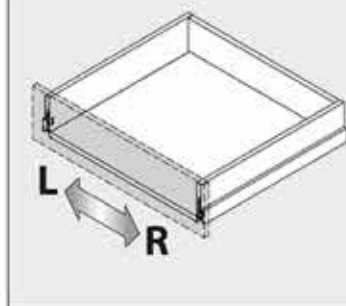
DRAWER EXTRACTION



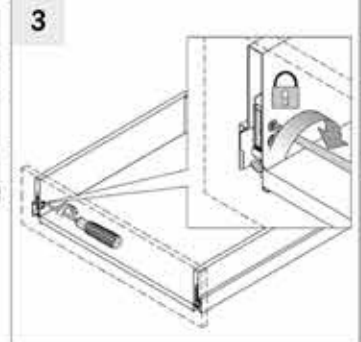
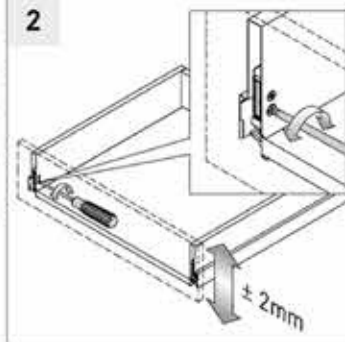
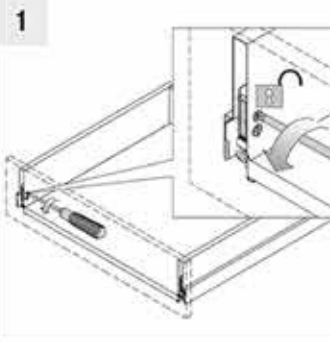
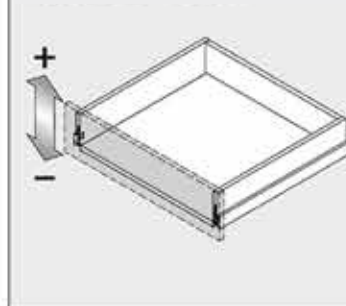
INCLINATION REGULATION PULL-OUT



LATERAL REGULATION



HEIGHT REGULATION



Description	Lateral regulation with +/- 2 mm limitation	Comfortable depth adjustment thanks to a + 3 / - 2 mm worm screw	Height regulation on a +/- 2 mm base
Tiemos hinges have three positional adjustments and speed regulation. Tested for 80,000 opening cycles			

Light level	Intermediate level (default settings)	Heavy level
The regulation lever indicates: • towards the furniture side. Apt to: • small and light doors.	The regulation lever indicates: • down, in the case of a stop to the left or up, in the case of a stop to the right. Apt to: • Standard doors.	The regulation lever indicates: • towards the furniture side. Apt to: • small and light doors.

WARRANTY



Dear Customer

We would like to thank you in advance for the trust you have placed in us by purchasing one of our kitchens.

We have great confidence in our products, so we hope to provide you with a satisfactory use and durability experience. However, remember to keep your purchase invoice if you need to make use of this guarantee, as will be required.

Guarantee coverage

This guarantee is governed by the Royal Decree I /2007 of 16 November, General Law for the Defense of Consumers and Users which sets the guarantee period in 2 years from kitchen delivery.

The modification of the General Law for the Defense of Consumers and Users includes the extension of the guarantee terms. This measure implies an extension from 2 to 3 years, for kitchens that are delivered from January 1, 2022 onwards.

Our company extends coverage up to a total of 10 years with replacement of any defective part or material not including installation labour. As an exception, those kitchens that incorporate poly laminate type doors will have a replacement guarantee of 5 years, as granted by the manufacturer.

In the case of products that our company does not manufacture but acts as a distributor, for instance lighting and appliances, the guarantee will be provided by the manufacturer of these products.

Guarantee covers any manufacturing defect, Delamora Espacio Integral will replace or repair the defective material in the shortest possible time. If the material has been discontinued, replacing parts will be of similar characteristics to the original. In conformity of the final product it must be considered that there is a tolerance margin due to different production batches as well as tone variations caused by the passage of time, the light incidence and moisture. We will always try to reduce these differences but in case of difficult supply, we reserve the right to use products from other suppliers, ensuring that the same qualitative and functional characteristics are maintained.

Requirements for coverage

- An authorized dealer must have installed our products.
- Products factory settings must not have been altered or modified.
- Maintenance and cleaning instructions must have been complied with.
- Cleaning products recommended in the manual must have been used.

There is not guarantee for damage caused by

- Spillage of corrosive products as vinegar, acids, ketones or alkalis.
- Discharges of water not removed promptly.
- Exposure to vapor caused by the non-use of extractor hood or its malfunction and dishwasher leaks.
- Exposure to heat sources such as oven or boiler dissipation and direct sunlight.
- Bumps or scratches reported after 3 working days since the installation of the kitchen.

In the case of products such as wood and veneers, streaks and tonality variations due to the material nature or its ageing by the light expose are not subject to guarantee.

How to use the guarantee

Any claim must be done through our distributors who will notify the factory.

Please read carefully and observe the instructions for maintenance and cleaning. If you respect these guidelines you can get the most out of your kitchen. Note that damage caused by non-diligence will not be subject to guarantee.

delamora

Delamora Espacio Integral S.L.

Calle del Roble s/n - Pol. Industrial Uranga

C/P 28942 - Fuenlabrada (Madrid) - España

delamora@delamora.es www.delamora.es